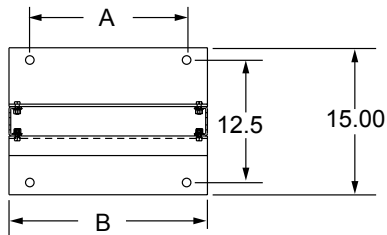
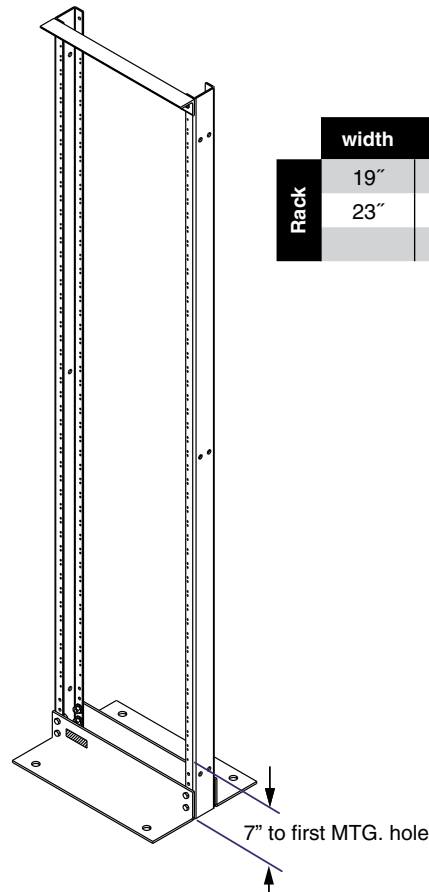
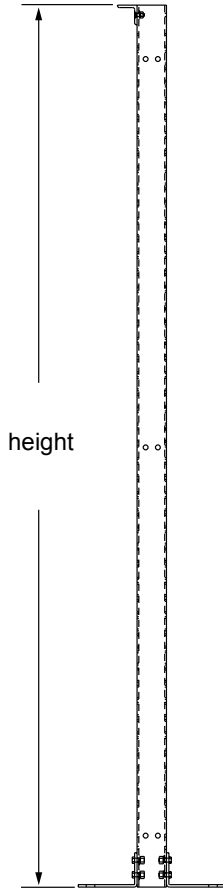
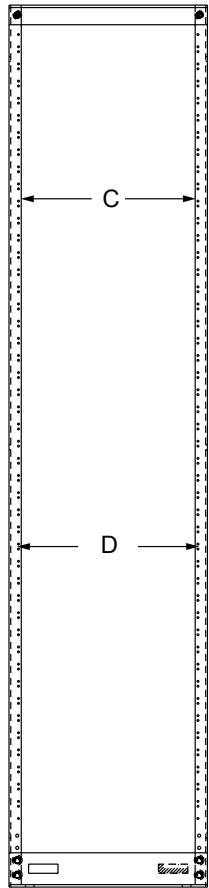


Made Right When You Need It, Driven To Be Better



Assembly instructions for Bolted NFR

- Attach top angle to uprights using 5/16 flat washer, 5/16 lock washer and 5/16 - 16 heavy hex nut.
- Attach the 2 floor angles using 3/8-16 x 1 hex head cap screw, 3/8 flat washer, 3/8 - 16 heavy hex nut.



	width	A	B	C	D
Rack	19"	16"	20-1/2"	17-3/4"	18-5/16"
	23"	20"	24-1/2"	21-3/4"	22-5/16"

NFR	AAA	BB	XX
<p>NFR: NEWTON FORMED RACK</p> <p>AAA: HEIGHT 084 = 84" or 7'-0" overall height 090 = 90" or 7'-6" overall height</p>			<p>XX: FINISH CODE 30 = TELCO GRAY 47 = RAVEN BLACK</p> <p>BB: UPRIGHT SPACING 00 = Welded EIA Wide (1-1/4" - 1/2") 01 = Welded EIA Universal 5/8" - 5/8" - 1/2") 02 = Welded WECO(1" Pattern) 50 = Bolted EIA Wide (1-1/4" - 1/2") 51 = Bolted EIA Universal 5/8" - 5/8" - 1/2") 52 = Bolted WECO(1" Pattern)</p>